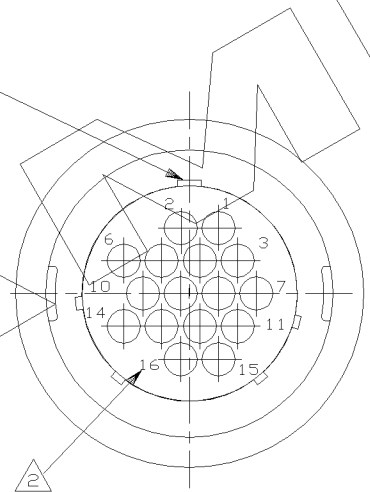
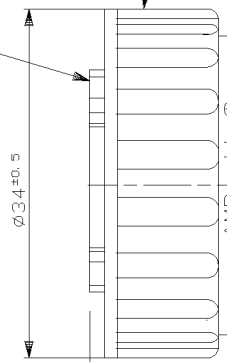


GHIERA DI ACCOPPIAMENTO<COUPLING RING>

CORPO CONNETTORE<PLUG HOUSING>

POLARIZZAZIONE<KEYING>

LATO CONNESSIONE
< MATING FACE >



IL DISEGNO INDICA IL P. N. 182642-1
< P. N. 182642-1 AS SHOWN >

- MATERIALE<MATL.>: TERMOPLASTICO COLORE NERO<THERMOPLASTIC, BLACK COLOR>
- OGNI CAVITA' E' IDENTIFICATA DAL NUMERO POSTO SIA SUL FRONTE CHE SUL RETRO DEL CONNETTORE. <CONTACT CAVITIES IDENTIFIED BY CHARACTERS>
- QUESTO CONNETTORE E' APPROVATO CON FILE N°E28476 E CERTIFICATO CON FILE N. LR7189A-259 <THIS CONNECTOR IS RECOGNIZED BY FILE N°E28476 AND CERTIFIED BY FILE N. LR7189A-259>

		CUSTOMER DRAWING FOR REFERENCE ONLY		DISEGNO PER CLIENTE SOLD PER RIFERIMENTO	
		THIS DRAWING IS UNPUBLISHED		RELEASE FOR PUBLICATION 1991	
		© COPYRIGHT 19 BY AMP INCORPORATED, HARRISBURG, PA. ALL INTERNATIONAL RIGHT RESERVED. AMP PRODUCTS MAY BE COVERED BY U.S. AND FOREIGN PATENT AND/OR PATENT PENDING			
		TOLLERANZE: SE NON DIVERSAMENTE SPECIFICATO <TOLERANCES: UNLESS OTHERWISE SPECIFIED>		DIAM. ISOLANTE <INS. DIA. RANGE>	
		± 0,3		RANGO FILLO <WIRE RANGE>	
		± 2°		SCALA <SCALE>	
B3 REVISED FOR ET00-0183-04		A. V. 07SEP 2004	ANGOLI <ANGLES>		AMP AMP ITALIA S.p.A. CORSO F.lli Cervi, 15 COLLEGGIO <TORINO>
B2 REVISED AND UPDATED PRODUCT DESCRIPTION FOR ET00-0182-02		D. C. 29NOV 2002	DIS.		DESCRIZIONE <DESCRIPTION> C. P. C. PLUG ASS'Y SHELL SIZE 17-16 FOR SOCKET CONTACTS, STD. SEX
B1 REVISED AND REDRAWN BY CAD ADDED NOTE 3 ET00-0123-99		G. S. 01-06K DR. 99	C. PIA		
B INTRODUCED A NEW COUPLE RING ET00-0034-99		R. D. 09-2 99	CONT. <CHK>		
A RELEASED FOR PROD.		G. C. 3-1 98	M. SCOMPARI		LOC. SIZE NUMBER <DWG NO. > I A3 C - 182642
REV. <REVISION RECORD>		DIS. DATA <DR >		REV. <REV. > B3	
		FIRST ISSUE 2 MARCH '84		FGLIO <SHEET> 1	
		S. SCHIAVONI		DI <DP > 1	

DISTRIBUZIONE
< PRINT DIST. >